

# ENGINEERING ANALYTICS

Our expertise integrates core Engineering and Analytics to bring value to manufacturing operations, quality and R&D



## Quality Control

Automate manual lab analyses such as microstructure phase and artefact classification through AI/ML, for higher throughput and accuracy.

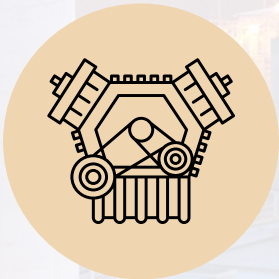


## Operations

Gain visibility into manufacturing blind-spots with ML/AI models to improve productivity and quality

## Research & Development

Accelerate product development and process improvement through data analysis and insights from production and quality data.

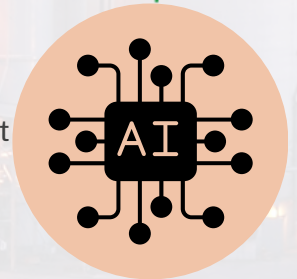


## Engineering

An engineering-first approach guarantees that the solution is precisely customized to meet the unique requirements of the problem at hand.

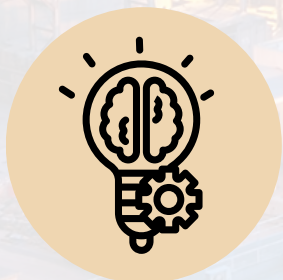
## AI/ML

Use of cutting-edge AI/ML techniques result in solutions that adapt to the ever-changing business environments and needs.



## Why Engineering Analytics?

Evolving Requirements



Engineering-Centric Approach



Superior Solutions



Optimization and Innovation

Power of Machine Learning

